

# SUNTA MOTOR ELECTRIC LTD.

## MODEL NO. 6025D\*-\*SERIES

**Size:** 60\*60\*25mm.

**Motor:** Brushless DC Motor

**Motor protected:** polarity+over current shutdown protected. (OCP)

**Frame(Housing):** PBT + 30% fiber glass black color UL94-0

**Impeller:** PBT + 30% fiber glass. Black color, UL94V-0.

**Lead wire:** 1007#26AWG. UL/CSA.

**Insulation resistance:** Min.10M Ohm at 500 VDC between terminal and the frame.

**Bearing type:** B: 2 ball bearing. Sleeve bearing S: one Sleeve bearing

**Operating Temp:** Ball bearing: within-20~80 degree C

Sleeve bearing: within-10~56 degree C

**Sleeve bearing:** within -10~56 degree C

**Life expectancy:** Ball bearing: 50,000 hours at 60 degree C.

Sleeve bearing: 20,000 hours at 45 degree C.

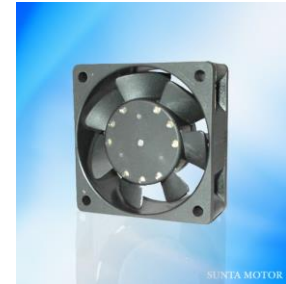
**Above measurements Tem. at:** Within 20~30 degree C.

**Above measurements humidity at:** 65%+-15%.

**Safety Approvals:** CE

**Net weight :**

**CONNECTOR:** L: lead wire



MODEL NO.	RATED	RATED	RATED	VOLTAGE	MAX. AIR		MAX.AIR		NOISE
	VDC	AMP	RPM	RATED VDC	FLOW	PRESSURE	INCH/H2O	DBA	
	VDC	A	RPM	VDC	CMM	CFM	MM/H2O	INCH/H2O	DBA
6025D05-HBPL	5	0.30	4400	4~8	0.689	24	4.6	0.18	31
6025D05-HSPL									
6025D05-MBPL									
6025D05-MSPL									
6025D1-HBPL	12	0.16	4400	6~13.8	0.689	24	4.6	0.18	31
6025D1-HSPL									
6025D1-MBPL									
6025D1-MSPL									
6025D1-LBPL									
6025D1-LSPL	24	0.10	3300		0.508	18	3.20	0.12	25
6025D2-HBPL									
6025D2-HSPL	48	0.08	4400	36~56	0.689	24	4.6	0.18	31
6025D4-HBPL									
6025D4-HSPL									

Remark :

- The above specification data are for reference only, general data tolerance  $\pm 10\%$
- Ball Bearing types are 2 Ball Bearing
- Special design are requested available, please inform us now.
- Sunta reserves the right to change the data without notice.

### Optional Function and Lead wire color

**FG :** Tachometer speed sensor output signal , open collector 2 square waves per revolution ,  
**lead wire color is white**

**RD:** Alarm output signal : ( motor run-Low, motor stop-High), lead wire color is yellow.

